

# Passive House Standard

Passive House Certification is now available in the US and calls for a very high level of building energy performance. The following drawings show a theoretical Passive House retrofit to an existing home.

**CEILING - R65**

**WALLS - R52**

**RIM - R70**

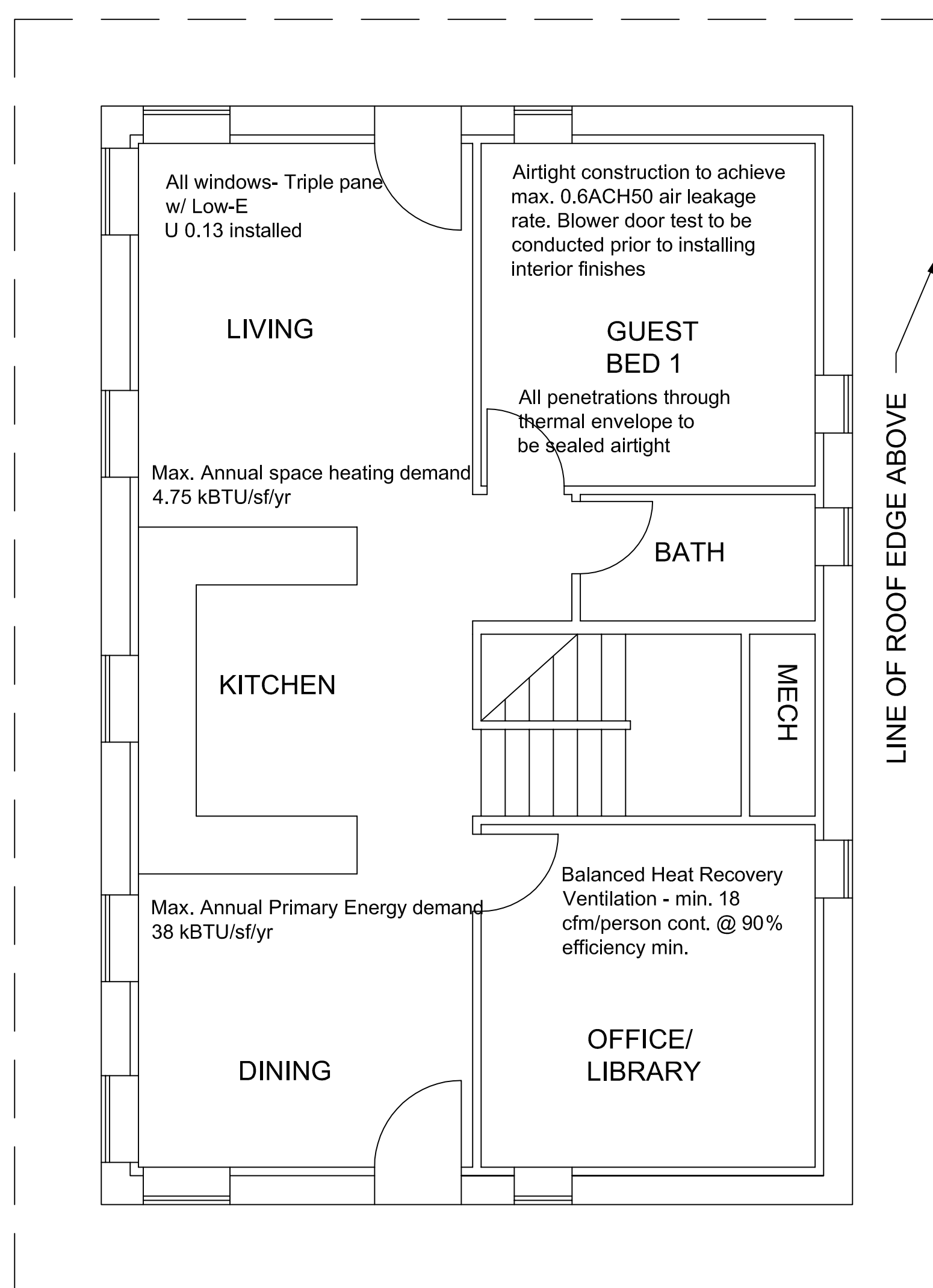
**SLAB EDGE - R56**

**AIR TIGHTNESS - 0.6ACH50 (or less)**

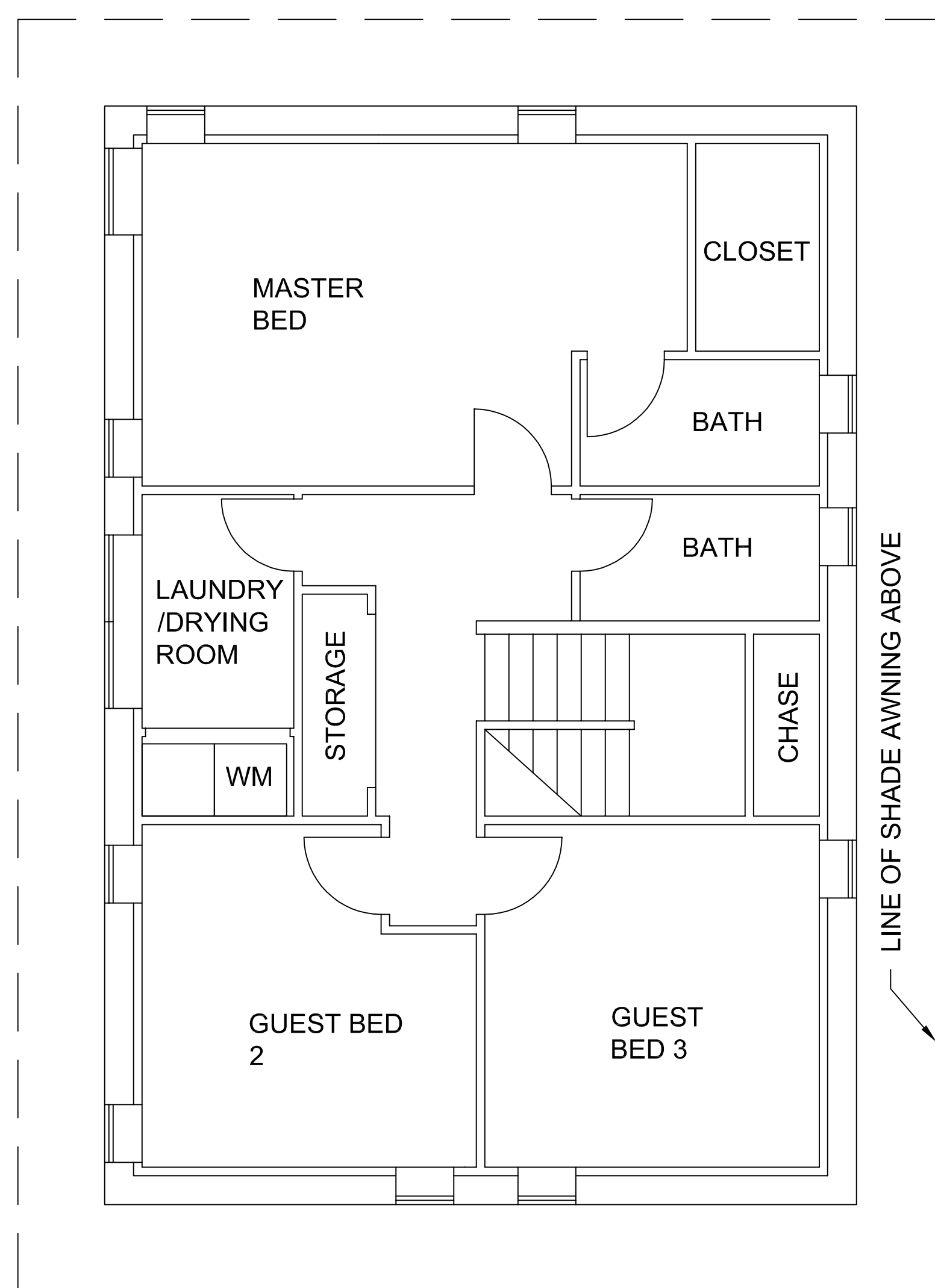
**HEAT RECOVERY VENTILATION**

**WINDOWS - U0.13 (or better)**

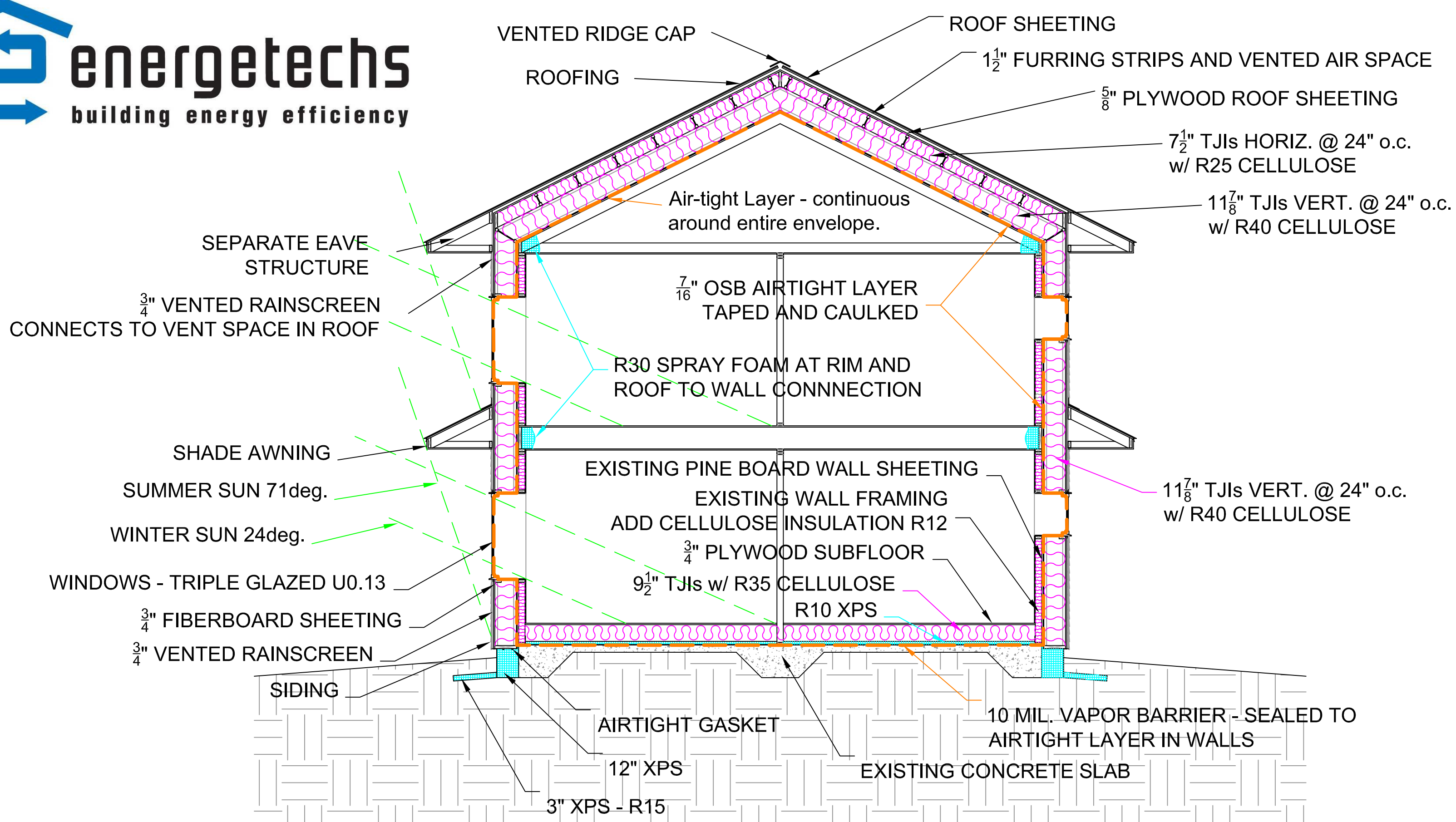
**FLOOR - R45**



GROUND FLOOR PLAN



SECOND FLOOR PLAN



[www.energetechs.com](http://www.energetechs.com)